

# Method of installing the MELSOFT MX Series

Thank you for choosing the MELSOFT MX Series Mitsubishi integrated FA Software.  
Please install this product into the personal computer according to the following procedures prior to use.

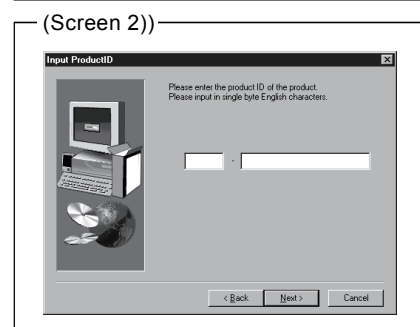
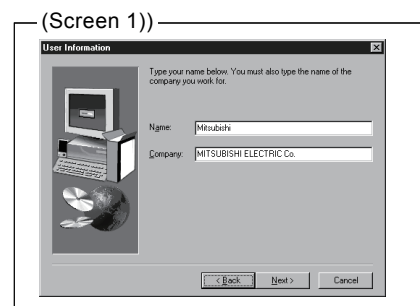
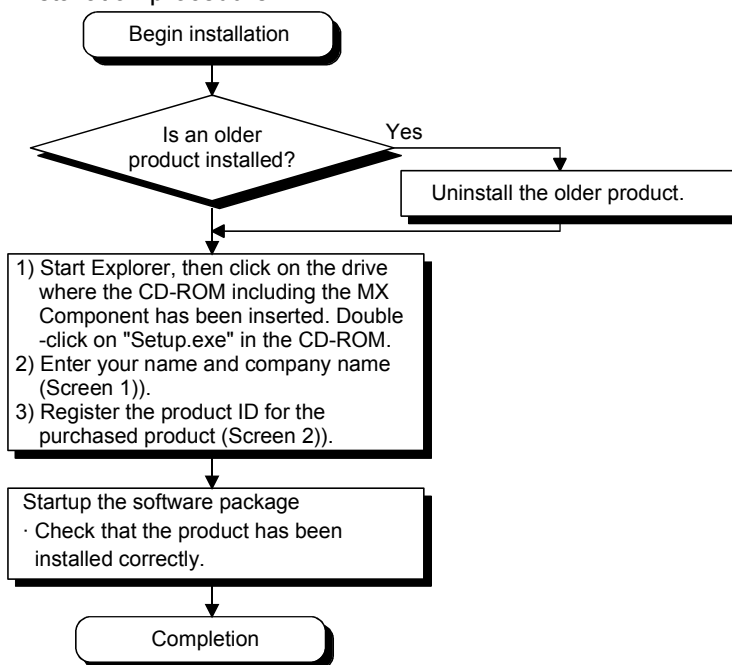
## [Installation/Uninstallation Procedures]

- When using the following Operating System, log on as the user who has the administrator attributes.  
Windows Vista® \*1  
Windows® XP \*2  
Microsoft® Windows® 2000 Professional Operating System  
Microsoft® Windows NT® Workstation Operating System Version 4.0
- Also, refer to the manual included in the CD-ROM for details of installation/uninstallation procedures.
- When installing MELSOFT to a Windows Vista® -based personal computer, read the technical bulletin FA-A-0008.

\*1: Generic term for Microsoft® Windows Vista® Home Basic Operating System, Microsoft® Windows Vista® Home Premium Operating System, Microsoft® Windows Vista® Business Operating System, Microsoft® Windows Vista® Ultimate Operating System, and Microsoft® Windows Vista® Enterprise Operating System

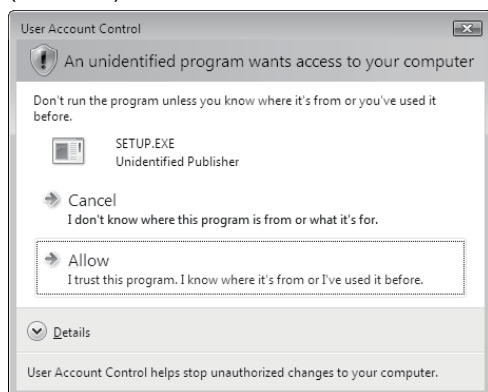
\*2: Generic term for Microsoft® Windows® XP Professional Operating System and Microsoft® Windows® XP Home Edition Operating System

### (1) Installation procedure

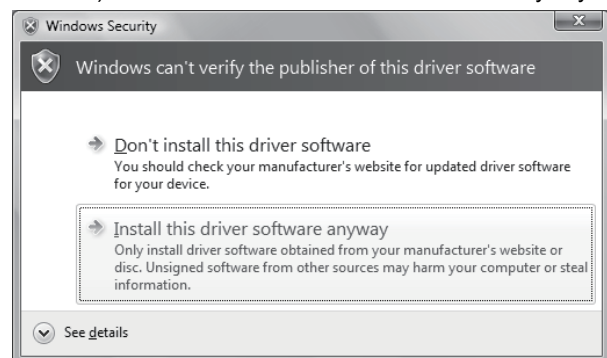


- If the confirmation screen appears during the installation, continue the installation according to the instruction on the screen.
- If any of the following screens appears, perform the operation instructed for respective screens.

(Screen 3) Select "Allow".



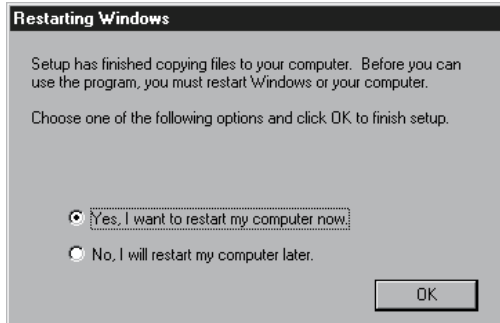
(Screen 4) Select "Install this driver software anyway".



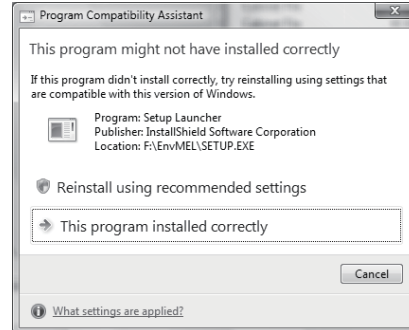
(Continued on the reverse side)

- The following screens may appear after the installation is completed.

(Screen 5) Restart the personal computer according to the instruction on the screen.



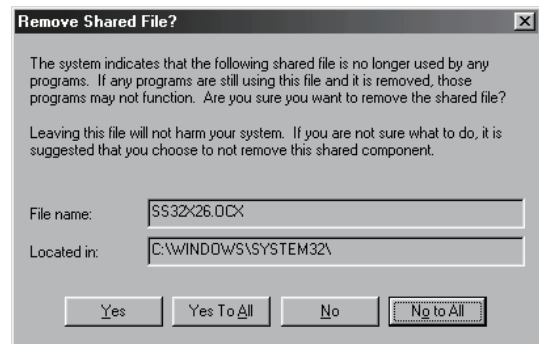
(Screen 6) Select "This program installed correctly". Do not choose "Reinstall using recommended settings", because the installer installs an incorrect module.



## (2) Uninstallation procedure

1. Uninstall the product from the control panel of Windows® .

- Uninstalling deletes all the settings within "Communication Setup Utility". To avoid this, export the file storing the settings.
- If the right screen appears during the uninstall procedure, click the "No to All" button.



## [Manual]

- The manual for this product is stored in the "Manual" folder on the CD-ROM.
- Adobe Reader is required to view the "Manual" (PDF data) on the CD-ROM. Adobe Reader can be downloaded from the Adobe Systems Incorporated web site.
- Refer to the readme.txt in the "Manual" folder, which describes the "Manual" documents stored on the CD-ROM.

Microsoft, Windows, Windows NT and Windows Vista are registered trademarks of Microsoft Corporation in the United States and other countries.

Adobe and Reader are registered trademarks of Adobe Systems Incorporated in the United States and other countries.