

1. M5PLCWIN(PLC) Windows

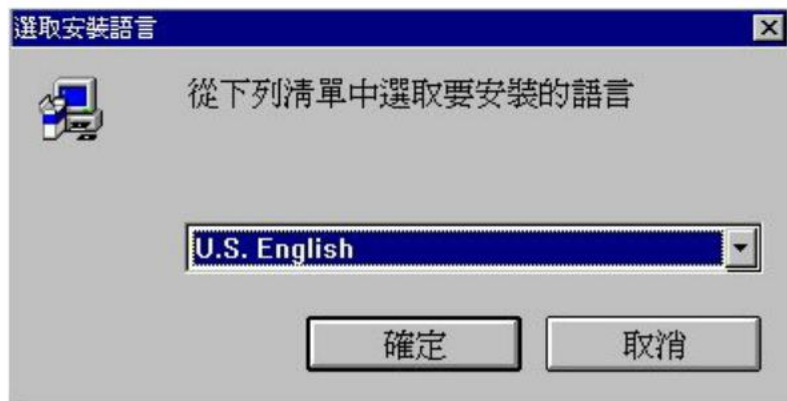
M5PLCWIN(PLC) Windows - M64, M500, M50, MAGIC SEQUENCE PROGRAM CNC

2. M5PLCWIN

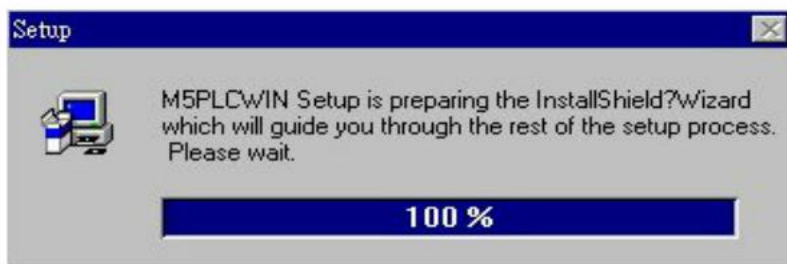
- M5PLCWIN(PLC) Windows Windows95/98, Windows-NT
- IBM PC/AT Pentium 100MHz CPU
- 10M byte RAM
- 3.5Inch, 1.44Mbyte Floppy Disk Device
- 256 dot CRT(640X480)
- 8Mbyte RAM
- PS/2
- Microsoft Windows

3. M5PLCWIN

- M5PLCWIN
- A:/disk1/Setup.exe



- SETUP



- MAIN MENU α $\text{í}\Psi\ddot{U}$



-



- CNC $\tilde{A}\text{p}\ll\text{-}\ddot{u}\text{í}\text{ }3\ddot{U}$
 $\text{!}\mathcal{D}\text{]}\text{C}\omega\text{-}^\circ\text{ [1]PC/AT}$
 [2]M64



- StartUp Folder 지정



-
-



- M5PLCWIN 2 디스크에 w, E' I'를 ; JA.° 복사.
(C:\NA:\disk1 → A:\disk2)



- ,«ö[Finish].



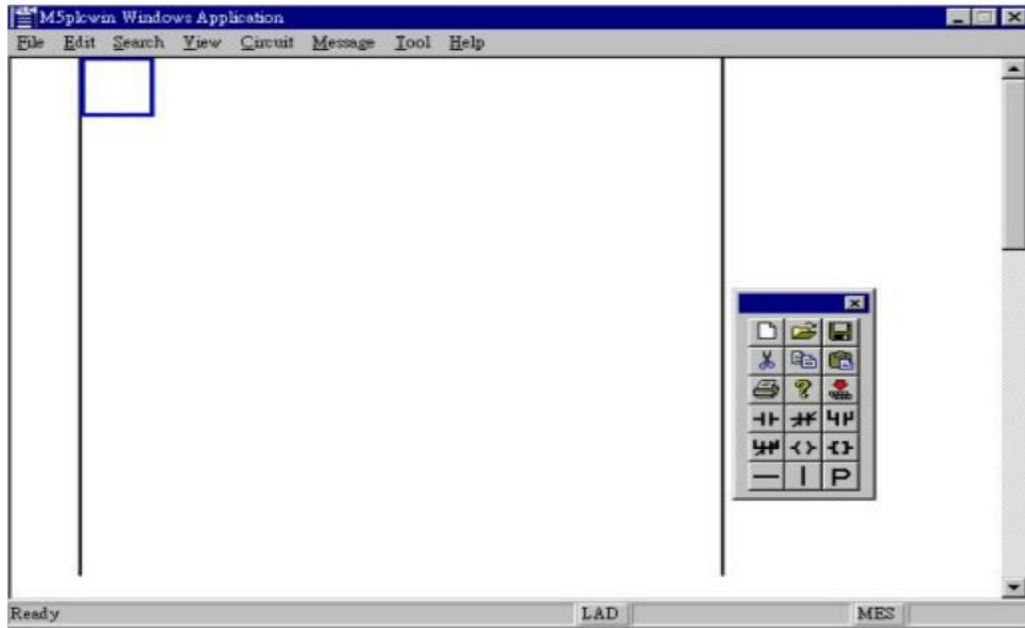
[PS]- Y! b! w, È! Lμ{ααϕ±NΔY! Ü±±îYx} → [· s!W² ¾ £μ{! ;]±NM5PLCWIN ²¾ £«á,! A- «· s
! w, È§Y¥i

4. "ÏÏÎª Ì PLC ¶}μo" BÆ

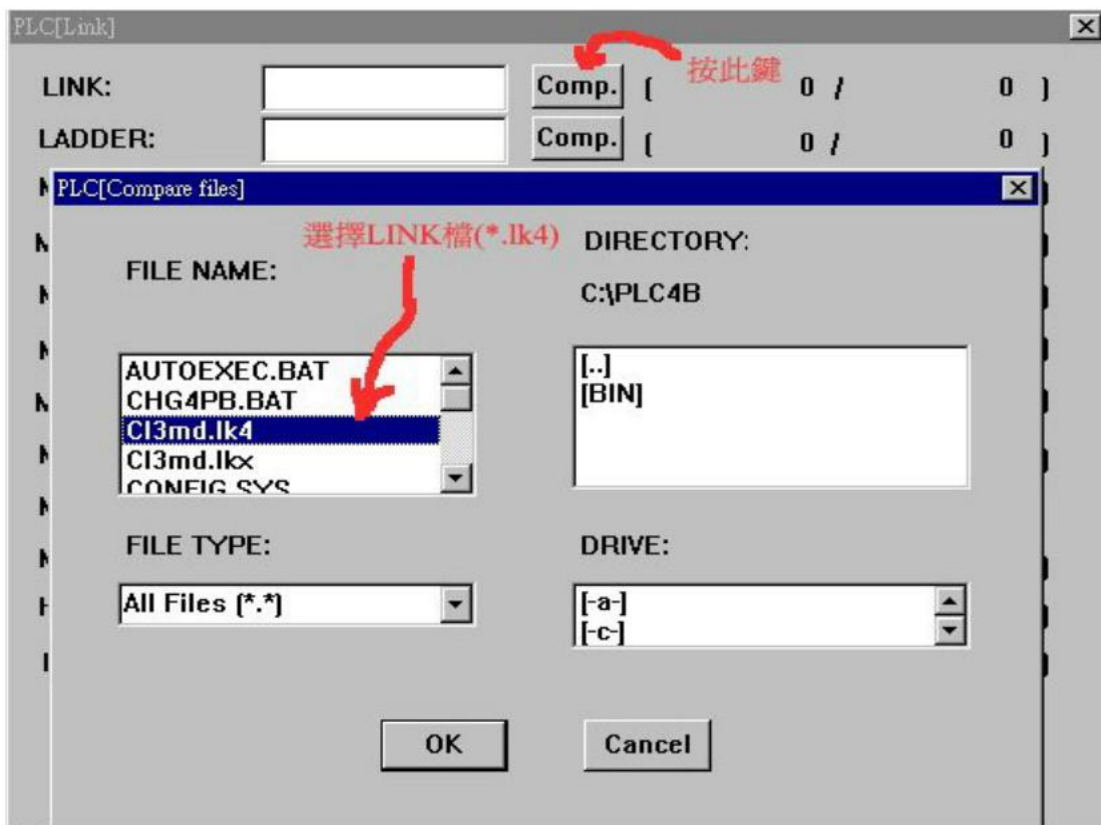
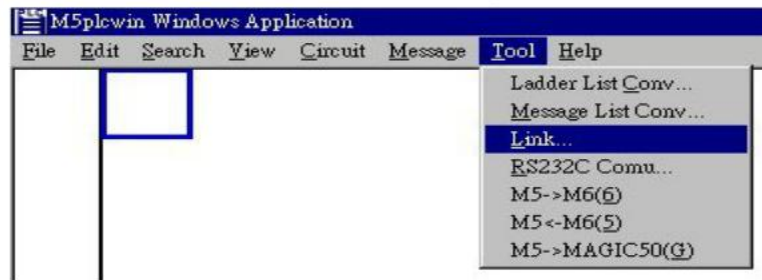
- M5PLCWIN(PLC ¶}μoαu" ã Windowsª ©).
- M5PLCWIN.
- [Tool]menuªº [Link] command ±Nladder,message α³ Î.
(ÀÉ®»Ý-º:*.LK4 ÇÎª Ì-OPLC4B(DOSª ©ªº LINK ®d ;)
(- YÀÉ-º:*.LKX(\$YM64ªº PLC ®d ;)«h»Ýýº μαÏ Îª´ «º Ê§ @Ñ Ò ÆQ¥!- ¶)
- [File]menuªº [Open] command ¶} ±Òladder(ÀÉ®»Ý-º:*.LD4).
- [Circuit],[Edit]menuªºªº command ° μ ladderªº ½¿ è .
- [Circuit]menuªº [Convert]command ° μ ladderªº ÁÛ «.
- [File]menuªº [Save]ÇÎ [Save as] command Àx! s ladder.
- [File]menuªº [Open] command ¶} ±Òmessage(ÀÉ®»Ý-º:*.MS4).
- [Message]menuªºªº command ° μ messageªº ½¿ è .
- [File]menuªº [Save]ÇÎ [Save as] command Àx! s message.
- [Tool]menuªº [Link] command ±Nladder,message ! X· Ò
- PLC ÀÉ¶ÇαJ M64/M65 ÇÎ MAGIC ±±î¾ªº,«h»Ý Îªº μ Îª´ «º Ê§ @
("ÏÏÎ [Tool]menuªº [M5->M6(6)]command Îª´ «! " M64/M65ªº PLC ®d ; .)
("ÏÏÎ [Tool]menuªº [M5->MAGIC50(G)]command Îª´ «! " MAGICªº PLC ®d ; .)
- [Tool]menuªº [RS232C Comu] command ±NPLC ¶}Çº e" ì M64/M65 ±±î¾ªº .
(- YαW- z¥\` à μLª k" ÏÏÎ- à -Ò¹ q, £³]©w©com portªºªº ÝÁD§ A¥i" ÏÏÎ ¥H«ªºªº comuat64.exe " Ó[Çº e§Y¥i.)
- Ladder,Message ! C! L»j Çi
- M5PLCWIN.

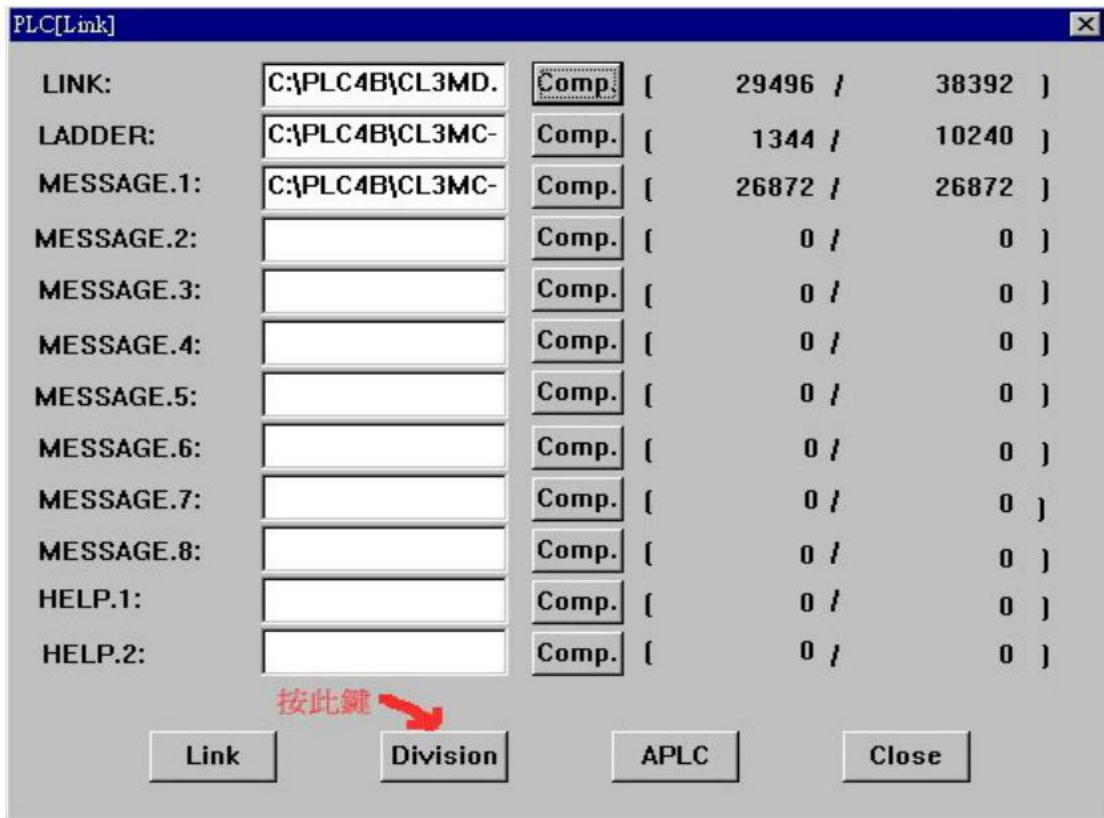
5. 1 é" Ò Ì ¥ Î » ; @

- M5PLCWIN.

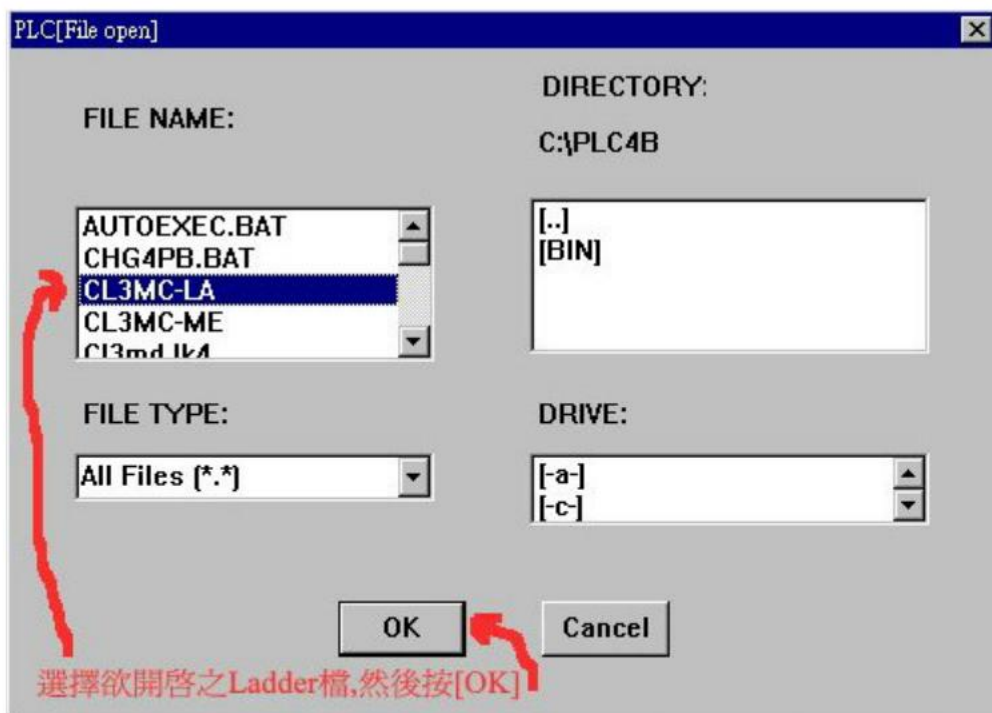
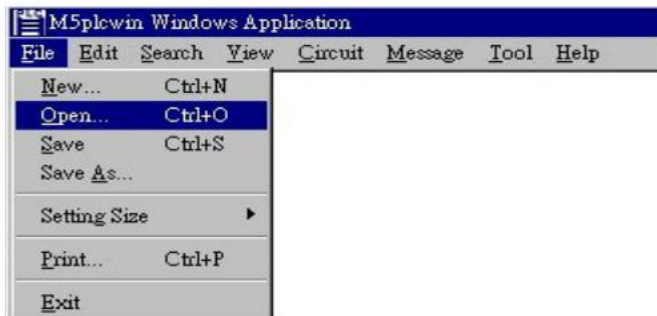


- [Tool]menu a ° [Link] command ±Nladder,message ¼³ Î.

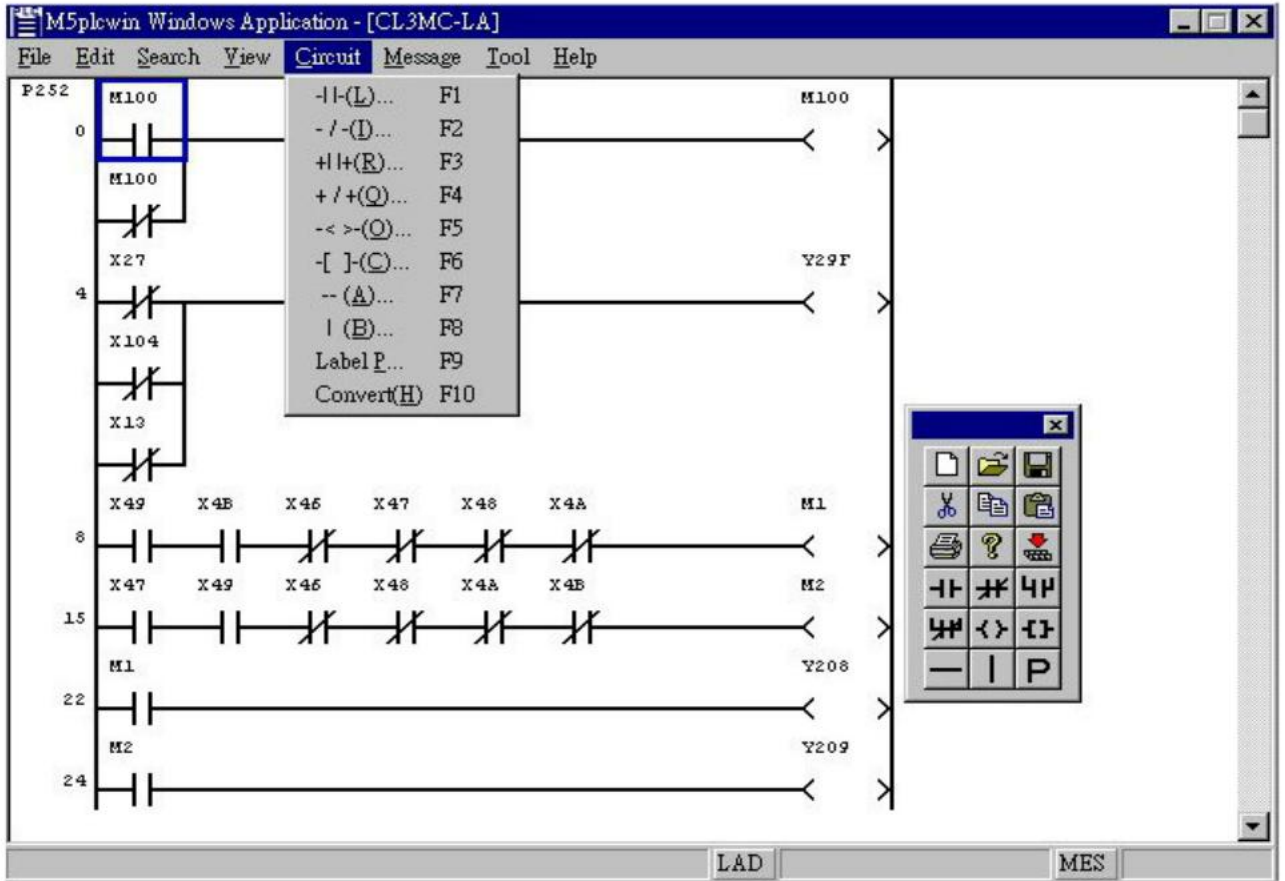




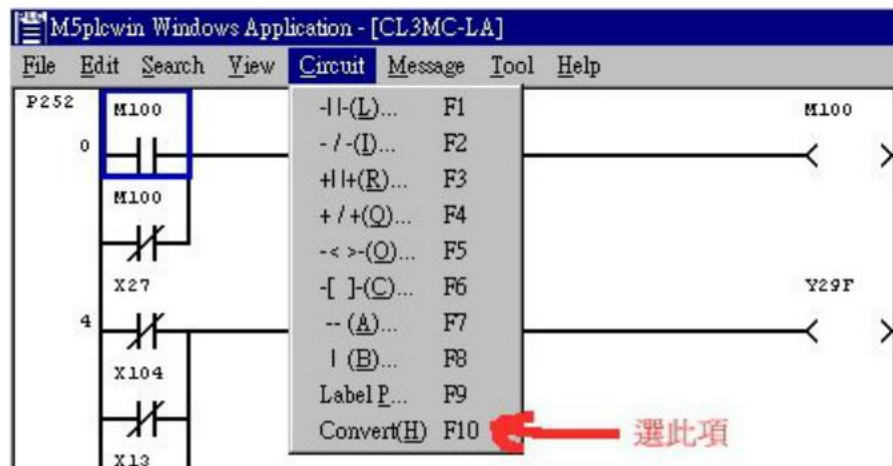
- [File] menu → [Open] command (Ctrl+O) → ladder (*.LD4).



- [Circuit],[Edit]menu α° command $\circ\mu$ ladder α° $\frac{1}{2}$ è.

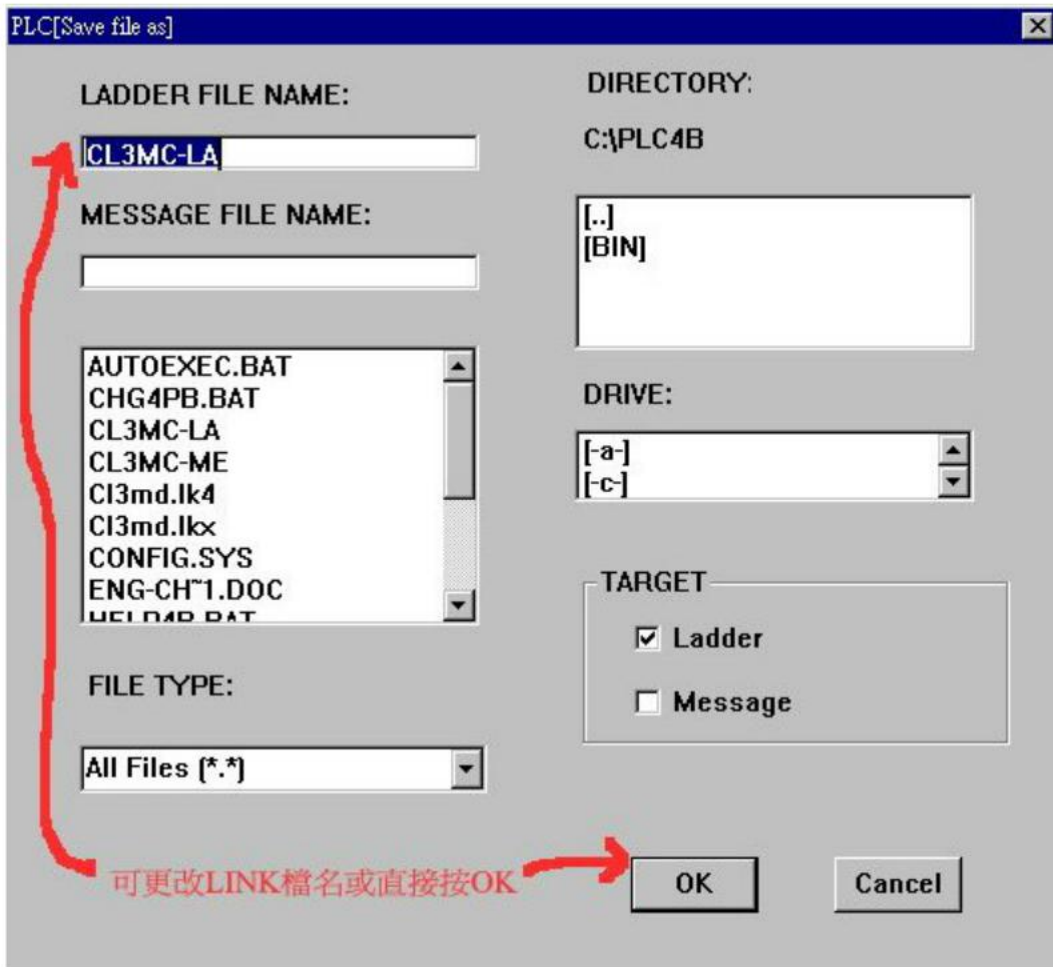


- [Circuit]menu α° [Convert]command $\circ\mu$ ladder α° $\frac{1}{2}$ è.

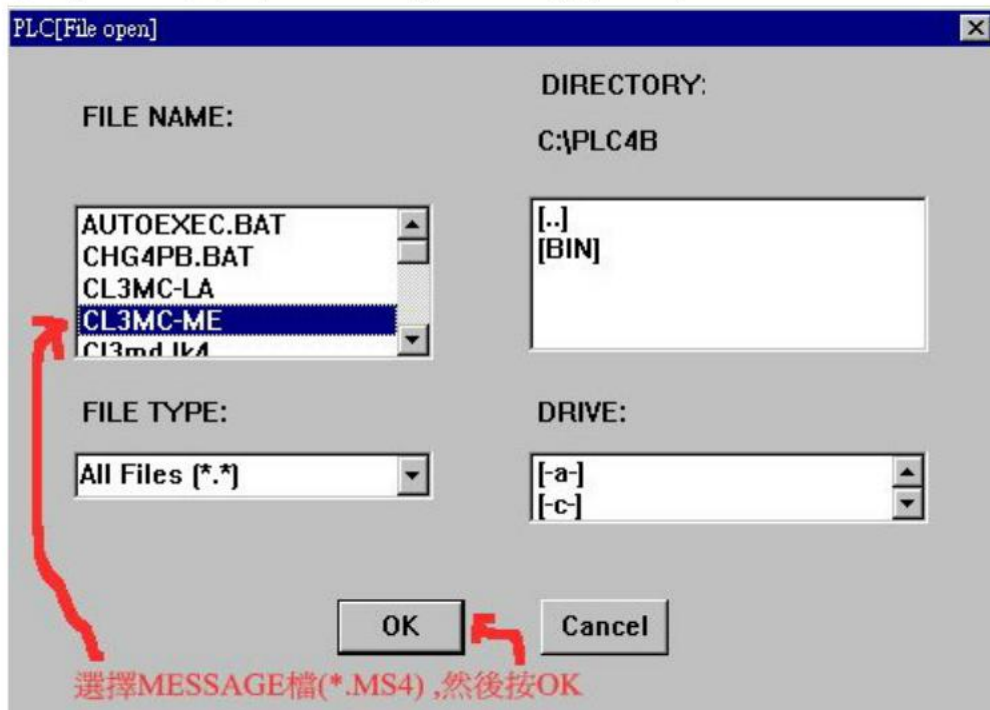


- [File]menu α° [Save] \hat{C} [Save as] command $\hat{\alpha}$ s ladder.

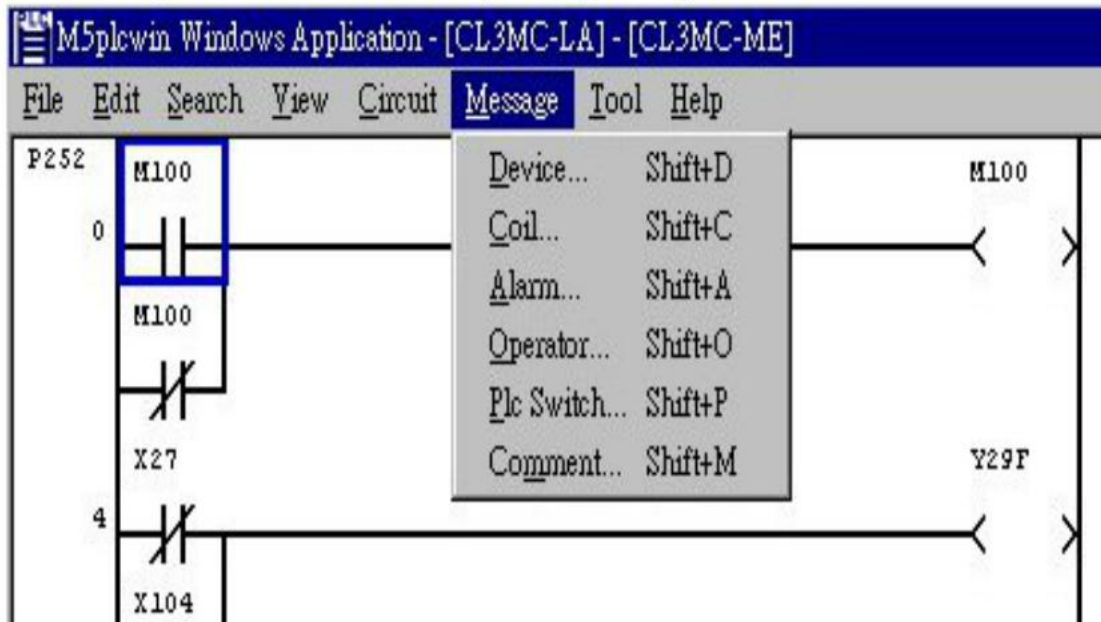




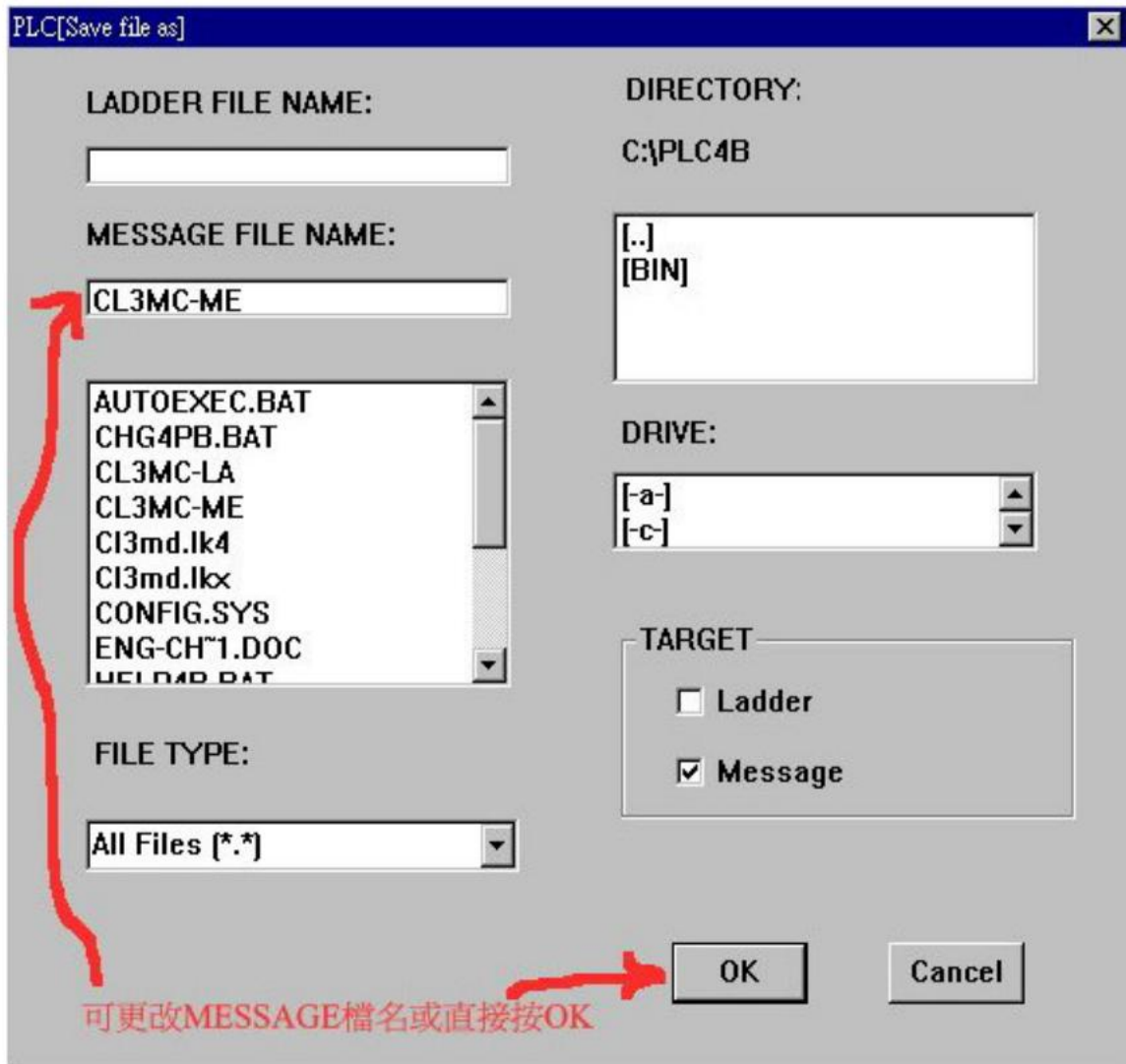
- [File] menu ^a [Open] command \llcorner \pm Message (*.MS4).



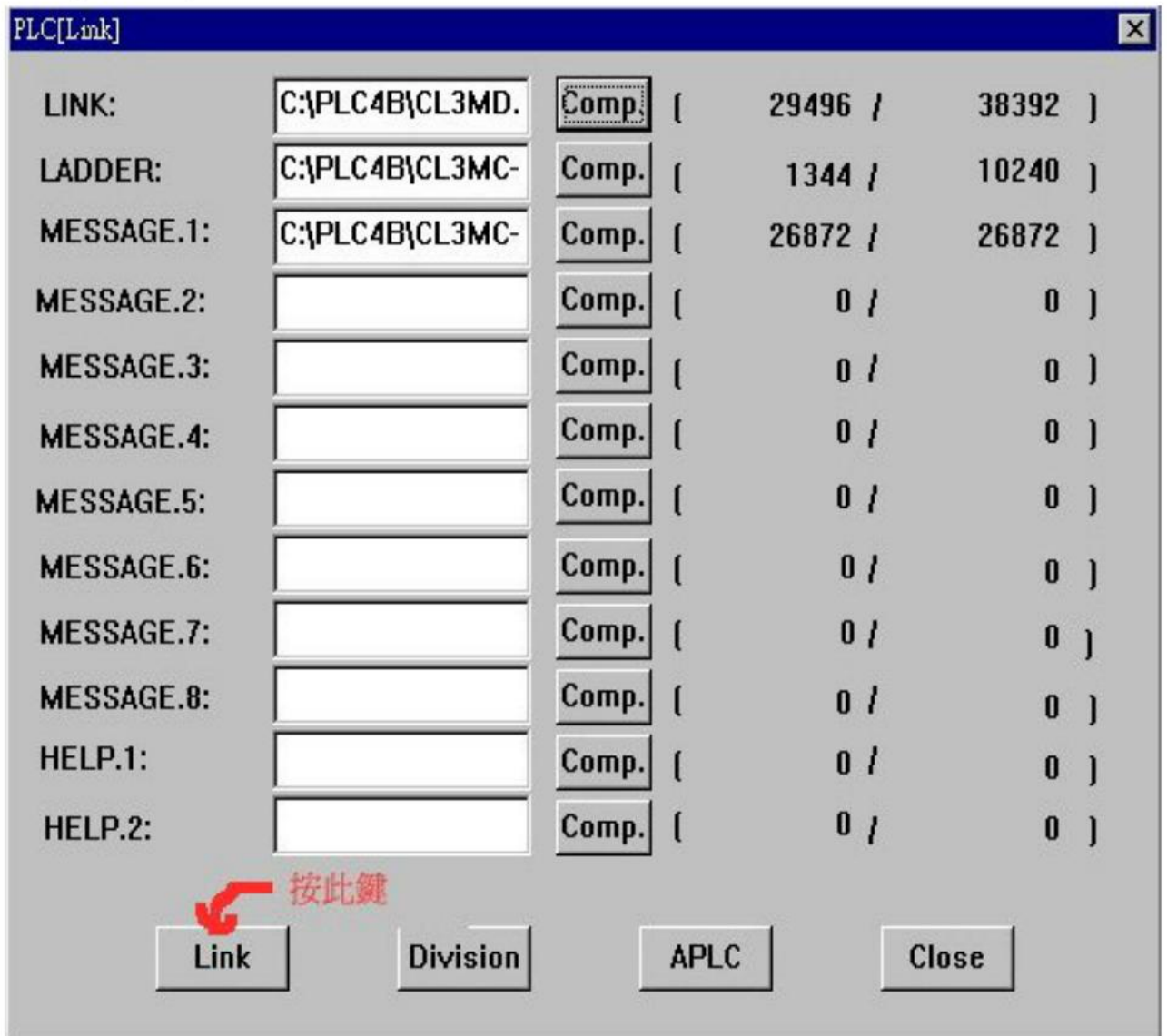
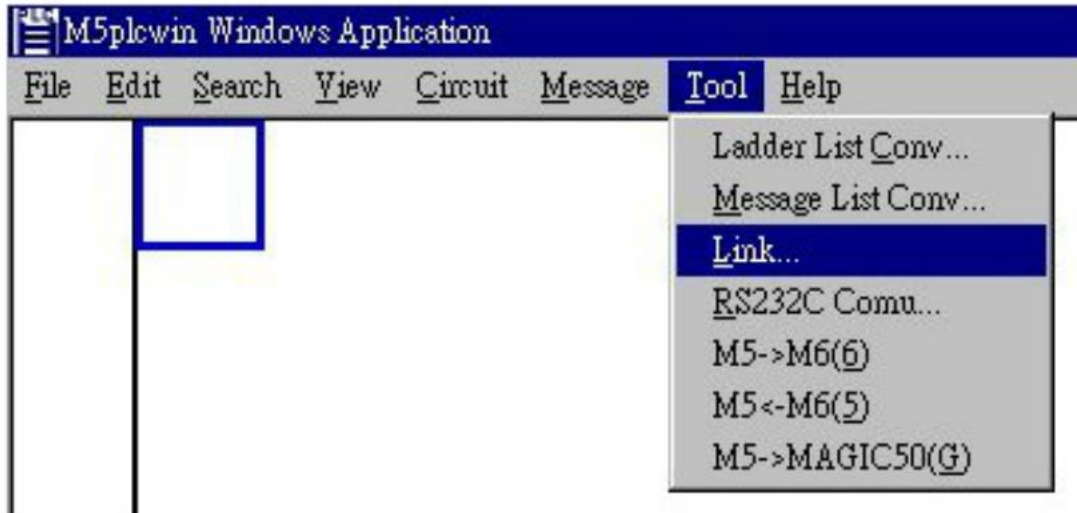
- [Message] menu $\alpha^{\circ} \alpha^{\circ}$ command $\circ \mu$ message $\alpha^{\circ} \alpha^{\circ} \alpha^{\circ}$.



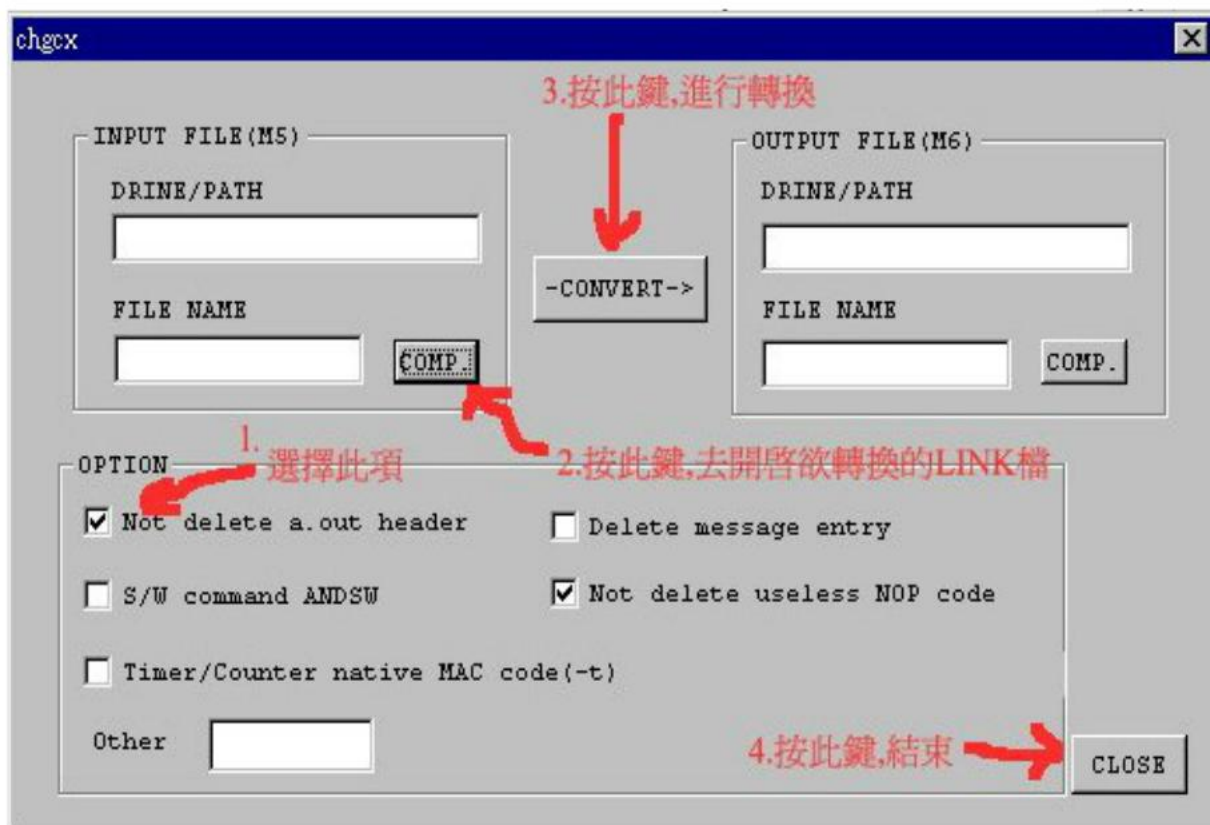
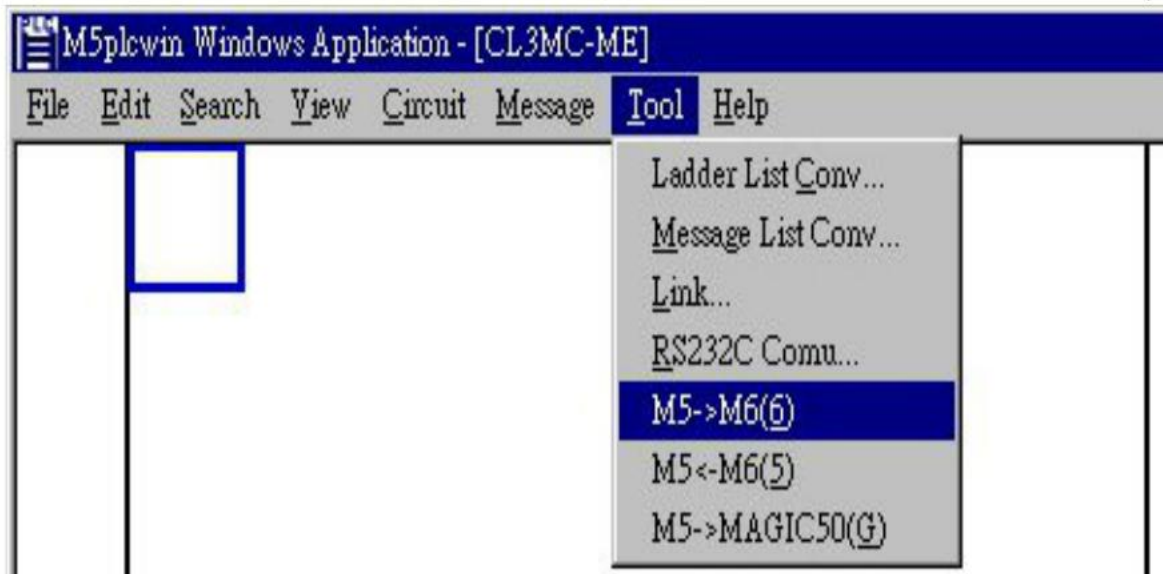
- [File] menu α° [Save] Ⓢ [Save as] command Å! s message.



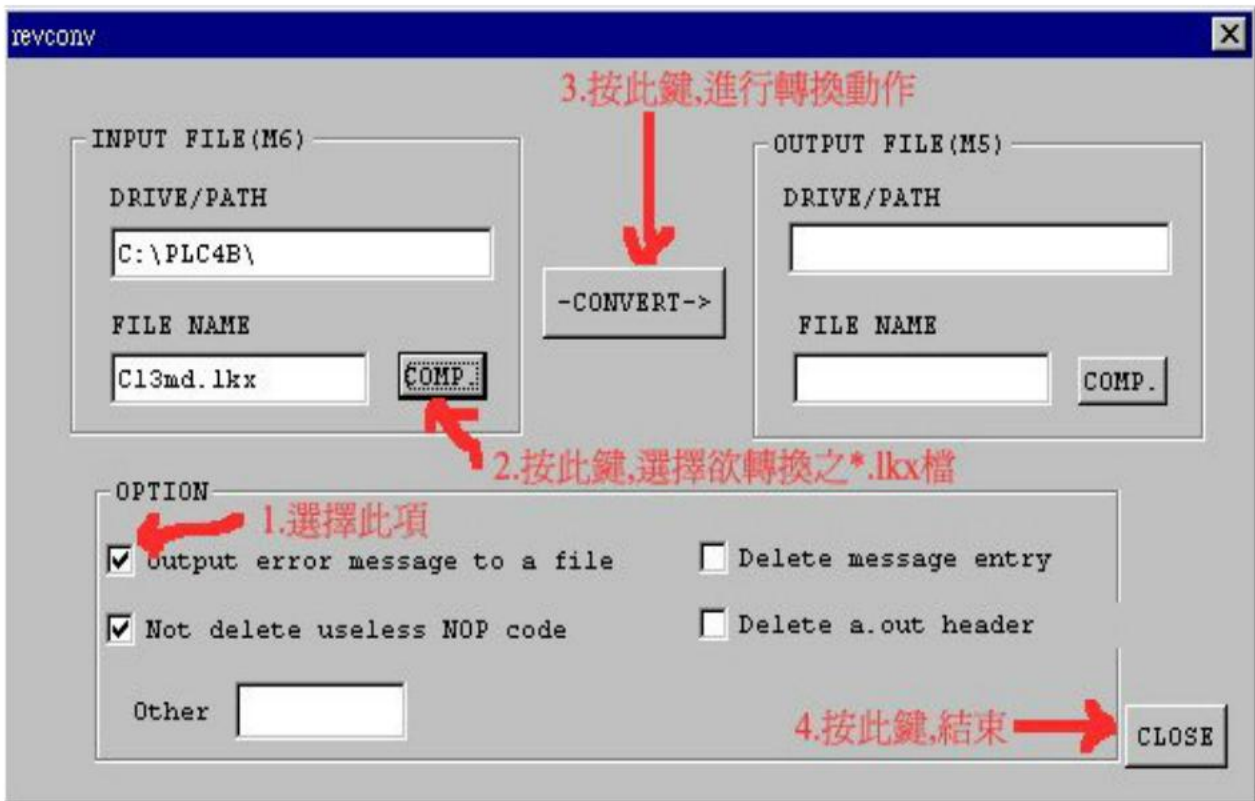
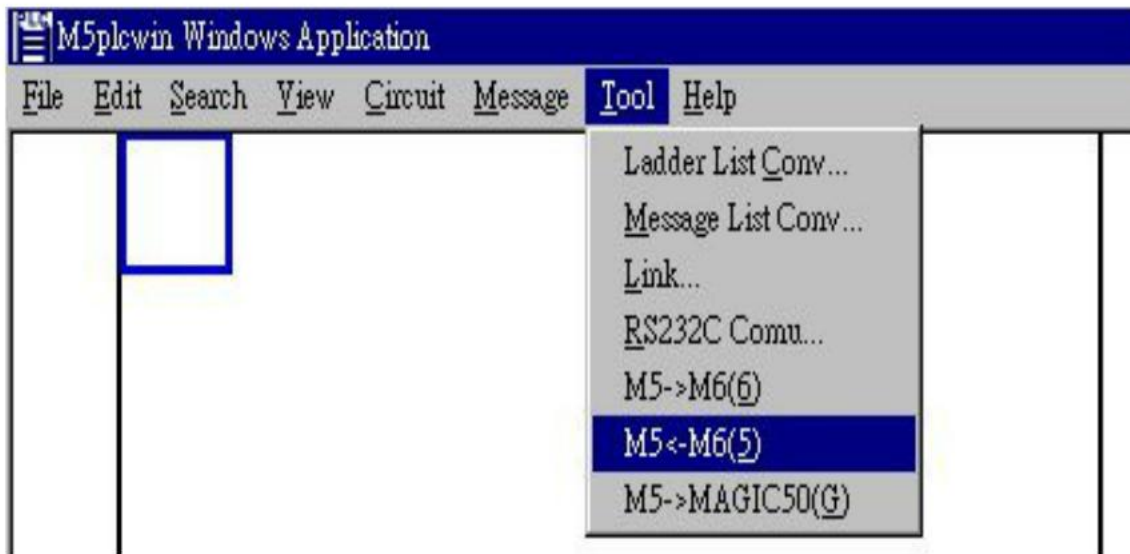
- [Tool]menu ^a° [Link] command ±Nladder,message ! X" Ö



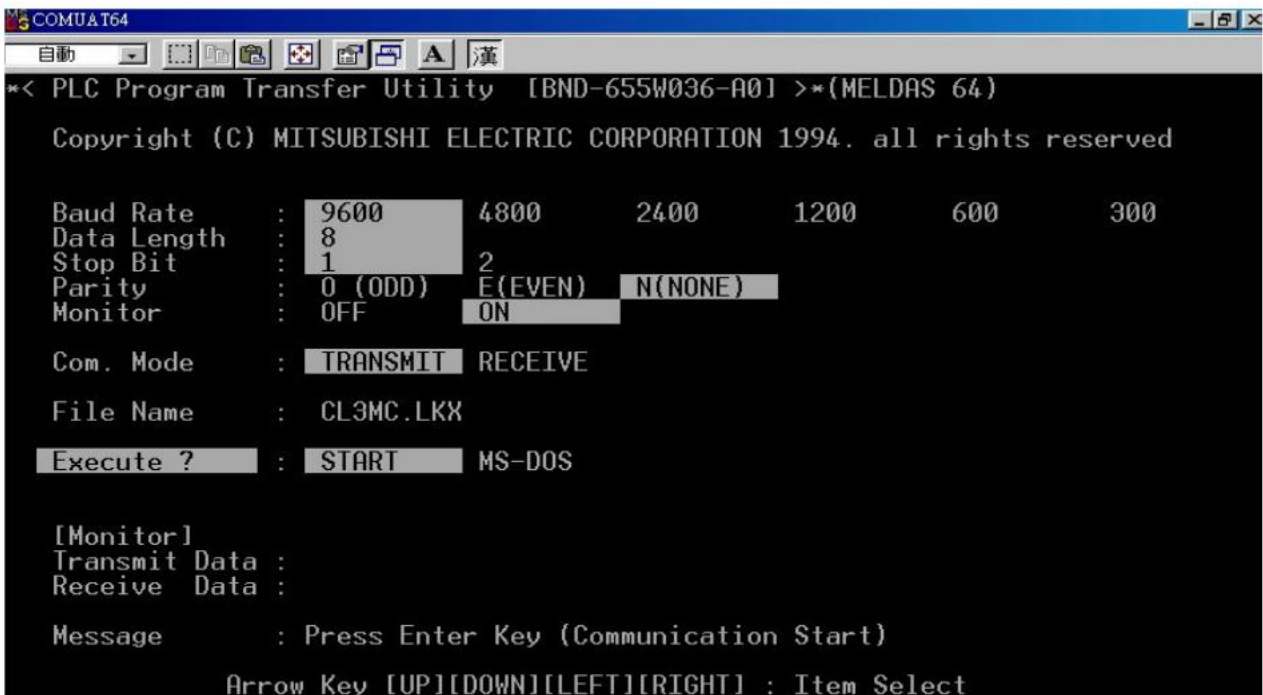
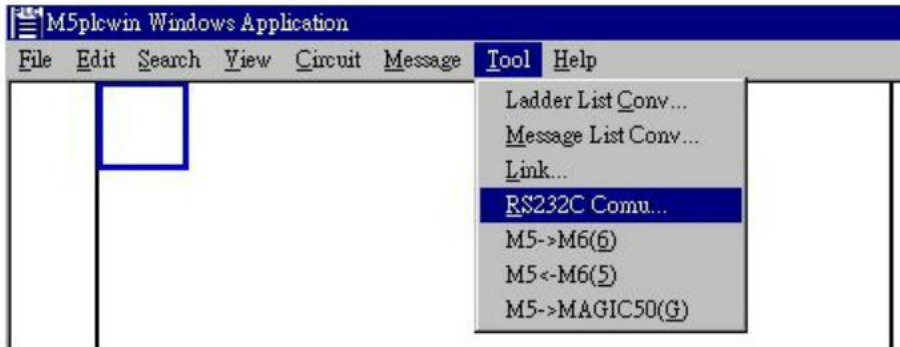
- PLC 轉換 M64/M65 到 MAGIC 50(G) 的步驟：
 - 在 [Tool]menu 選擇 [M5->M6(6)]command 轉換 M64/M65 到 PLC 格式。
 - 在 [Tool]menu 選擇 [M5->MAGIC50(G)]command 轉換 MAGIC 到 PLC 格式。



- M64/M65 a° PLC Å ¢J M5PLCWIN ¢°, <h>Ýÿý° µ¢í Âà´ ¢° Ê§@
(´İÝÍ [Tool]menu a° [M5<-M6(5)]command Âà´ ¢¡´´ M5PLCWIN a° PLC @&d ¡.)



- [Tool]menu a° [RS232C Comu] command ±NPLC ¶[Ç° e"i M64/M65 ±±"i ¾æ°. (- YαW- z¥\^- àμL^ k" İ,¥Î^- à-0¹ q, £³]@w@com port a ° ° ÝAD§ A¥i" İ ¥Î ¥H«e a ° comuat64.exe " Ö[Ç° e§Y¥i.)

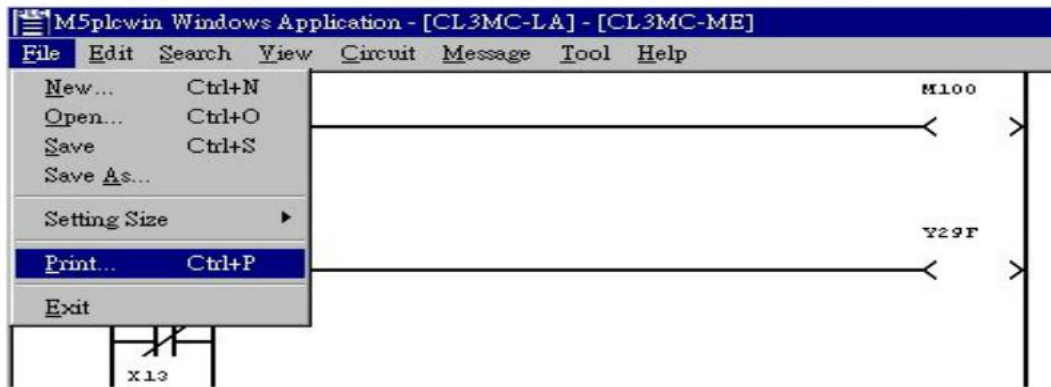


NC °¼Ñ/Æ]! pαU:

| [I/O DEVICE PARAM] | | === DEV 0 === | | PARAM 2.2/7 | |
|--------------------|-----------------|---------------|---------------------|-------------|-----------------|
| # | | # | | # | |
| 9101 | DEVICE NAME | FDD | 9111 DC2/DC4 OUTPUT | 3 | 9121 EIA CODE I |
| 9102 | BAUD RATE | 1 | 9112 CR OUTPUT | 1 | 9122 |
| 9103 | STOP BIT | 3 | 9113 EIA OUTPUT | 0 | 9123 # |
| 9104 | PARITY CHECK | 0 | 9114 FEED CHR. | 100 | 9124 ' |
| 9105 | EVEN PARITY | 0 | 9115 FARITY V | 0 | 9125 = |
| 9106 | CHR. LENGTH | 3 | 9116 TIME-OUT(sec) | 30 | 9126 |
| 9107 | TERMINATOR TYPE | 3 | 9117 DR INVALID | 0 | 9127 \$ |
| 9108 | HAND SHAKE | 3 | 9118 DATA ASCII | 1 | 9128 |
| 9109 | DC CODE PARITY | 1 | 9119 | | 9129 |
| 9110 | | | 9120 | | 9130 |
| | | | | | |
| # () DATA (| | | | | |
| | | | | | |
| WORK | PROCESS | I/O PAR | SETUP | MENU | |

- Ladder, Message | C: L » | @í

1. çï ³Ä[File]menu a ° [Print] command | C: L ladder ðí message.



2. «Ø³ :

[1] PRINT MODE: çï ³Ä LAD.+COM.+CRS.

(1) POINT START STEP:]@w| C: LLadder a ° ° _@Âí STEP.

(2) POINT END STEP:]@w| C: LLadder a ° µ² §ô STEP.

(3) START PAGE NO: /Ð]@w-°°1".(- Y, Ó[µ³]-° 0 @É, «hµLª k| C: L)

[2] MESS. MODE: í PRINT TARGET çï ³Ä DEVICE, COIL @É, ! 1 ¶µ. lª° @w-°

All device of coil.(§A¥í" Ì! Úªvª° »Ý- n§í ÁÜ 1 ¶µçï ³Ä)

(1) All device of coil: ! L¥X@Ö ³ª° coil.

(2) selected device of coil: »Ý«ü@w" I/O DEVICE"

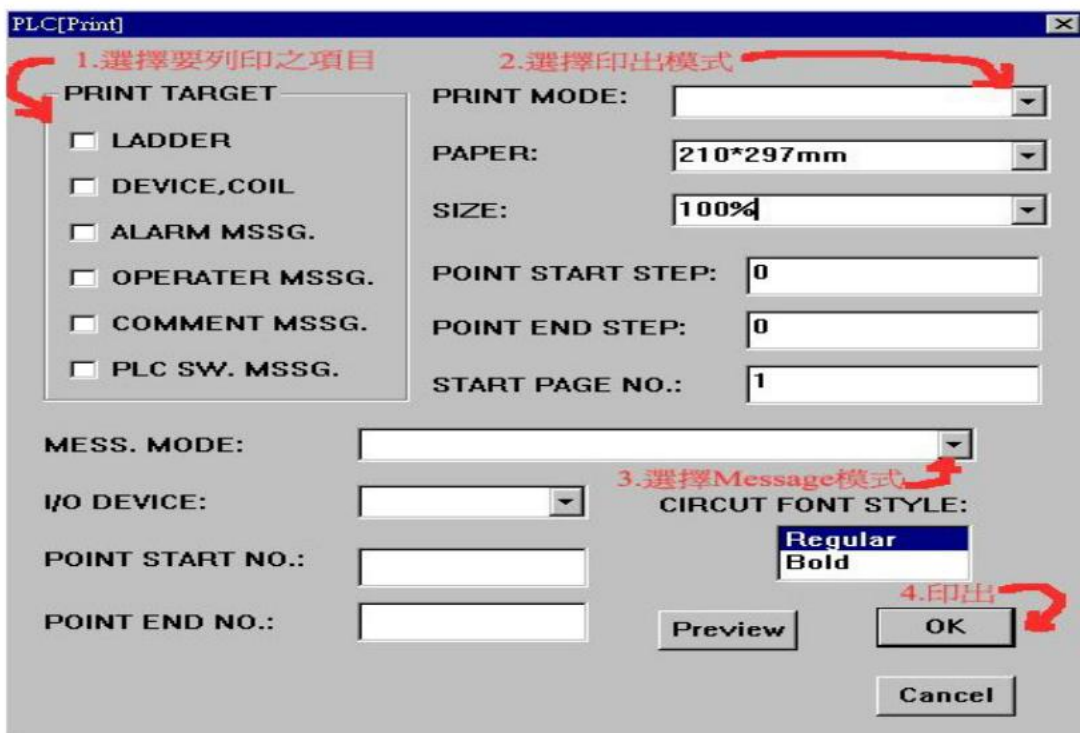
(3) selected dev. & no. of coil: »Ý«ü@w" I/O DEVICE", "POINT START NO", "POINT END NO"

(4) All device of device: ! L¥X@Ö ³ª° ±µÂí

(5) selected device of device: »Ý«ü@w" I/O DEVICE"






(6) selected dev. & no. of device: »Ý«ü@w" I/O DEVICE", "POINT START NO", "POINT END NO"

3. çï ³Ä "Preview", ¥i¥ý¹ wÄý! L¥Xª§µ²ª G(«Ø³ "Ï¥Í)



- M5PLCWIN.

改定履歷

| 版別 | 發行日期 | 內 容 | 作 成 | 照 查 | 檢 認 | |
|----|-------------|-------|---|---|---|-------------------------------|
| A | 2000 年 11 月 | 初版發行. |  |  |  | |
| | | | 作 成  | 照 查  | 檢 認 表題 MELDAS 500/64/65 系列 PLC 開發軟體(Windows 版) 簡易說明書 | 登錄番號 TMN-A001A(TWN) |